



PUMA 85cc - CADETE - TAG - PORTUGAL

CARBURETTOR Tillotson HL-352A

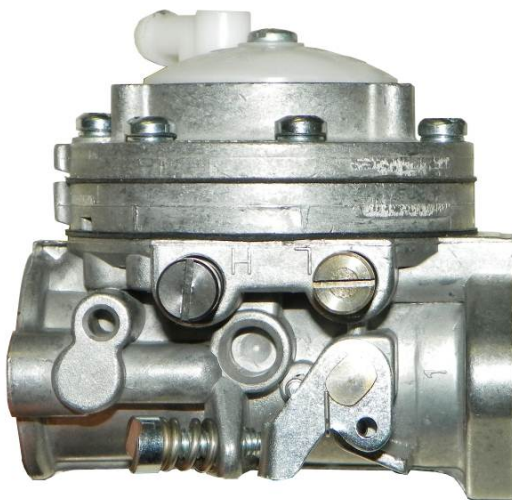


PHOTO OF ADJUSTING SIDE

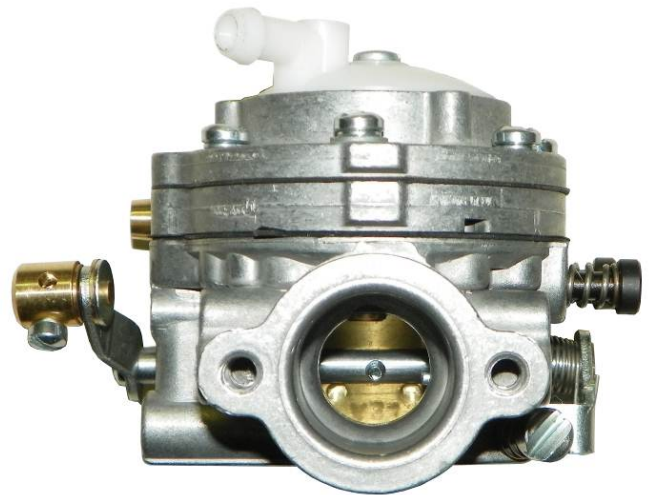


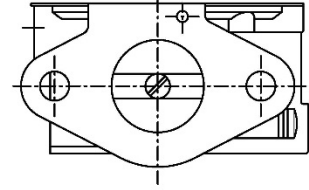
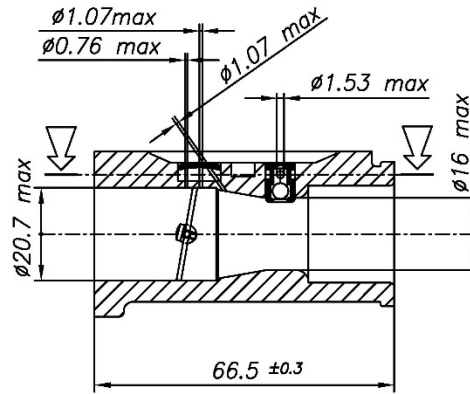
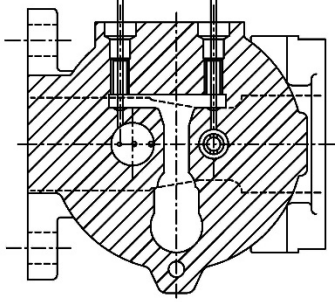
PHOTO OF INLET SIDE

Manufacturer	TILLOTSON LTD.
Make	TILLOTSON
Model	HL-352A

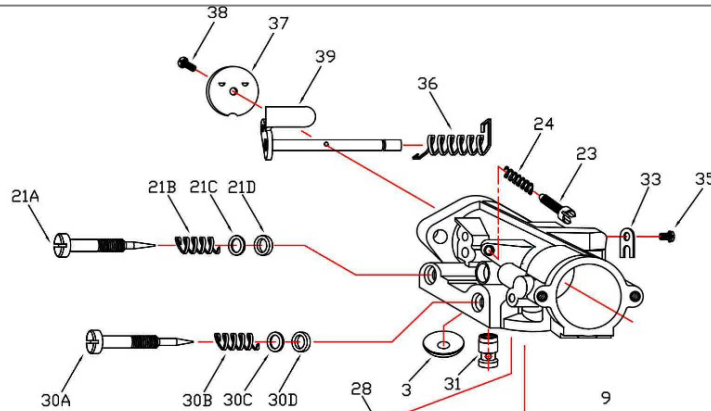
SECTION VIEW

$\phi 0.94 \text{ max}$
LOW SPEED

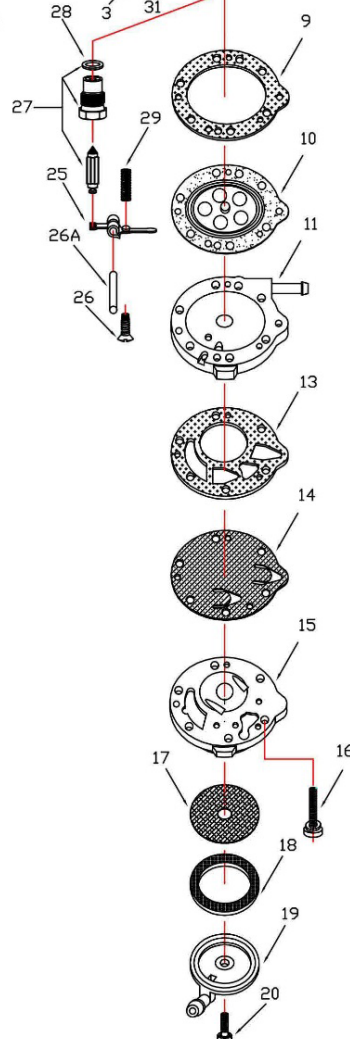
$\phi 1.37 \text{ max}$
HIGH SPEED



HL-352A



REF:	PART NO:	PART DESCRIPTION
3	*179-55	BODY CHANNEL WELCH PLUG
9	+*16B-217	DIAPHRAGM GASKET
10	+*237-600	DIAPHRAGM
11	91-1018	DIAPHRAGM COVER ASSEMBLY
13	+*16B-223	FUEL PUMP GASKET
14	+*237-214	FUEL PUMP DIAPHRAGM
15	141-55	FUEL PUMP BODY
16	15C-51	FUEL PUMP BODY SCREW(6)
17	95-170	FUEL STRAINER SCREEN
18	*16B-205	FUEL STRAINER COVER GASKET
19	91A-251	FUEL STRAINER COVER
20	15B-313	FUEL STRAINER COVER RETAINING SCREW
21A	43-388	IDLE MIXTURE SCREW
21B	24B-449	IDLE MIXTURE SCREW SPRING
21C	78A-256	IDLE MIXTURE SCREW WASHER
21D	44-270	IDLE MIXTURE SCREW PACKING
23	15C-9	IDLE SPEED SCREW
24	24B-131	IDLE SPEED SCREW SPRING
25	*155A-27	INLET CONTROL LEVER
26	15B-329	INLET CONTROL LEVER FULCRUM SCREW
26A	32-79	INLET CONTROL LEVER FULCRUM PIN
27	*233-706 P	INLET NEEDLE & SEAT SET
28	*16B-199	INLET SEAT GASKET
29	24B-345	INLET TENSION SPRING
30A	43-401	HIGH SPEED MIXTURE SCREW
30B	24B-449	HIGH SPEED MIXTURE SCREW SPRING
30C	78A-256	HIGH SPEED MIXTURE SCREW WASHER
30D	44-270	HIGH SPEED MIXTURE SCREW PACKING
31	363-501	NOZZLE CHECK VALVE
33	29-218	THROTTLE SHAFT CLIP
35	15C-18	THROTTLE SHAFT CLIP RETAINING SCREW
36	24B-291	THROTTLE SHAFT RETURN SPRING
37	14A-34	THROTTLE SHUTTER
38	15C-29	THROTTLE SHUTTER SCREW
39	13-2136	THROTTLE SHAFT & LEVER
	RK-114HL	REPAIR KIT
	DG-1HL	DIAPHRAGM & GASKET SET
	*	INDICATES CONTENTS OF REPAIR KIT
	+	INDICATES CONTENTS OF DIAPHRAGM & GASKET SET.



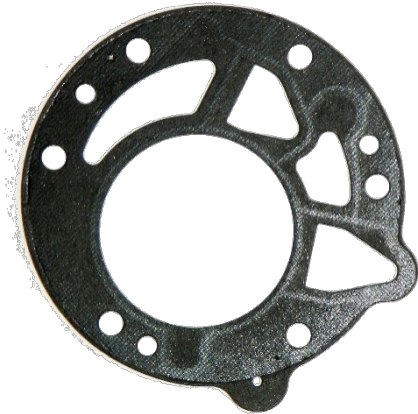
PARTS OF CARBURETTOR

REF.9 - P. N°16B-217
DIAPHRAGM GASKET (BLACK)



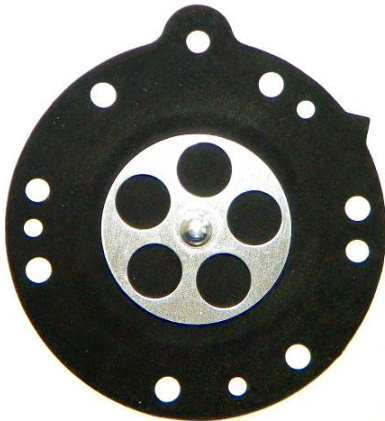
Thickness = 0.55 ± 0.1 mm

REF.13 - P. N° 16B-223
FUEL PUMP GASKET (BLACK)



Thickness = 0.55 ± 0.1 mm

REF.10 - P. N°237-600
DIAPHRAGM



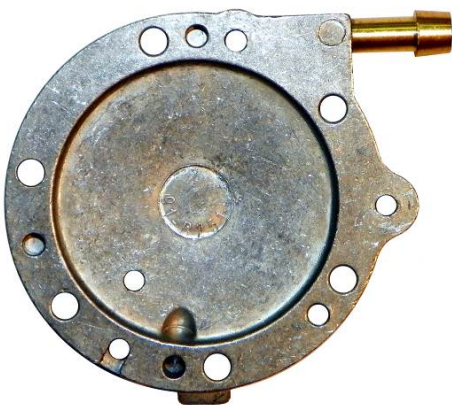
Thickness = 0.13 ± 0.07 mm

REF.14 - P. N°237-214
FUEL PUMP DIAPHRAGM



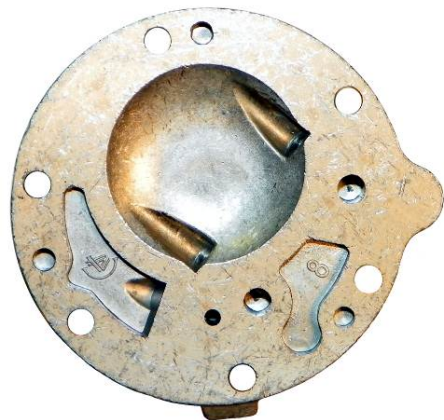
Thickness = 0.08 ± 0.063 mm

REF.11 - P. N° 91-1018
DIAPHRAGM COVER ASSEMBLY



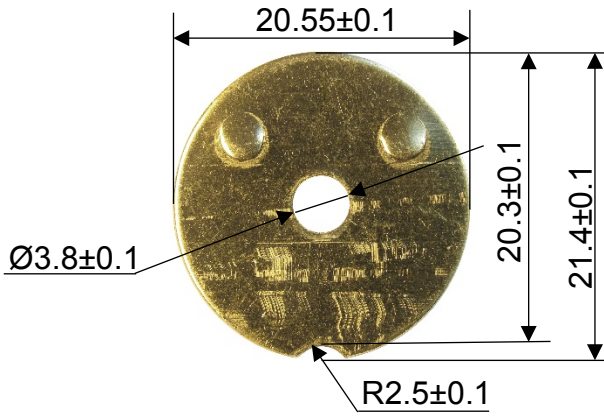
Thickness = 6.75 ± 0.15 mm

REF.15 - P. N° 141-55
FUEL PUMP BODY



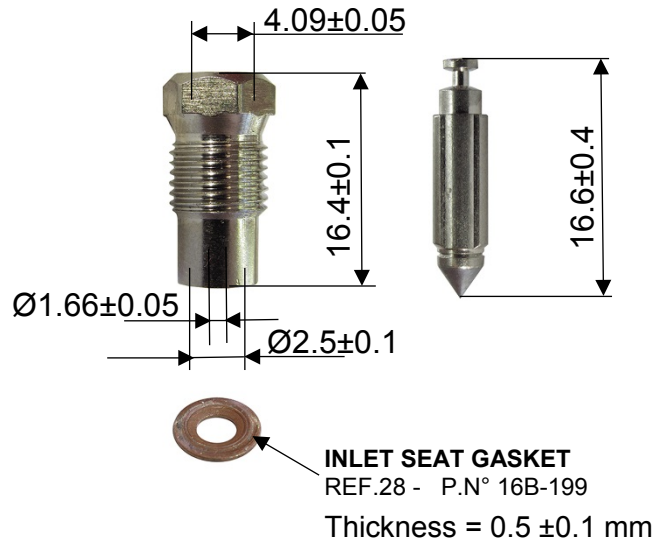
Thickness = 12.5 ± 0.15 mm

**REF.37 - P.N° 14A-34
THROTTLE SHUTTER**



Thickness = 0.81 ± 0.1 mm

**REF.27 - P.N° 233-706P
SEAT SET + INLET NEEDLE**



**REF.30A - P.N° 43-401
NEEDLE HIGH SPEED**



**REF.21A - P.N° 43-388
NEEDLE LOW SPEED**



VIEW FIXING FLANGE - ENGINE SIDE

